

Stainless Steel Floor Sinks

Square Floor Sinks

Square grates for a wide variety of applications



Round Floor Sinks

Versatile & Functional

Stainless steel floor sinks are typically installed in commercial kitchens and food production areas.

Suited for a variety of applications:

From commercial/restaurant, to manufacturing/industrial.

Quality Materials

304 stainless steel material provides durability, easy maintenance, and corrosion resistance.

Perfect where aesthetic appearance is important.

Stainless steel floor sinks are often used as point drains in breweries, dairies, and other high-sanitation applications.



Supply

Drainage

Support

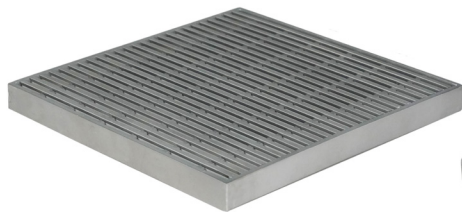
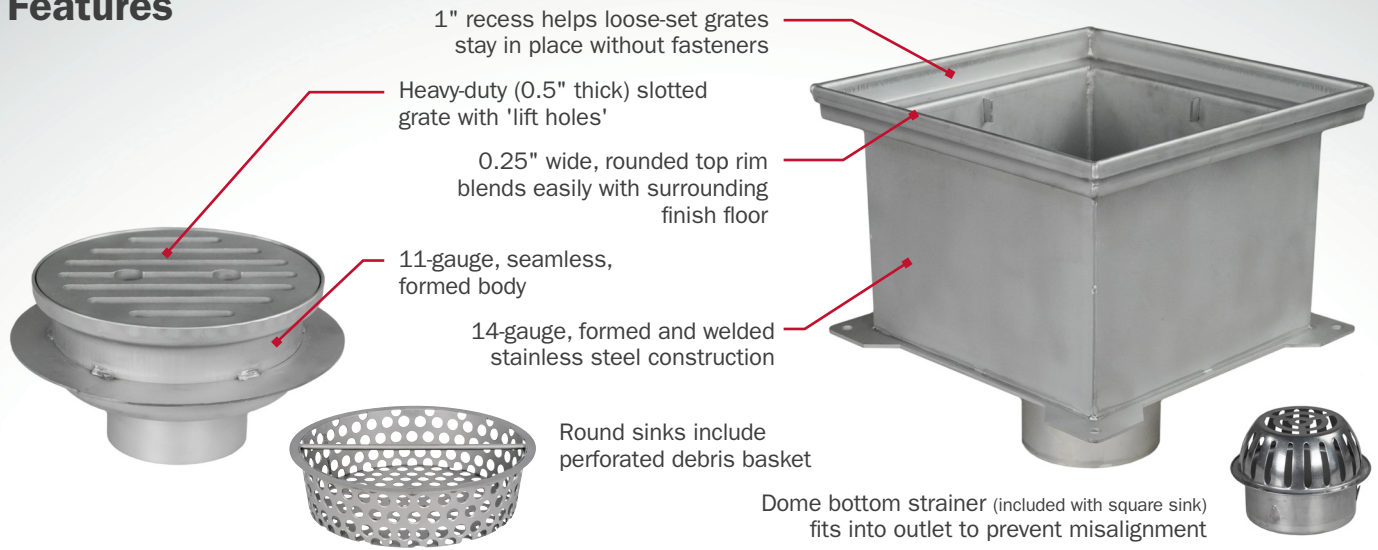
Specialties

www.siouxchief.com

TAKE THE FIELD.



Features



861-GKQ2FW



861-GKQ2F



861-GKQ2FL



861-BKQ2



860-3SS

Buying Information

ITEM NO.	DESCRIPTION	MIN. QTY.	CASE QTY.
STAINLESS STEEL SQUARE FLOOR SINK			
861-SQ2428	12" x 12" x 8" deep - Stainless steel square floor sink with dome bottom strainer - 4" No-Hub connection	1	1
SQUARE FLOOR SINK GRATES & ACCESSORIES			
861-GKQ2F	Stainless steel grate for 861-SQ2428 - 11ga. square perforated pattern - Full	1	1
861-GKQ2H	Stainless steel grate for 861-SQ2428 - 11ga. square perforated pattern - Open-Half	1	1
861-GKQ2FL	Stainless steel grate for 861-SQ2428 - Heavy-duty, high-inflow ladder pattern - Full	1	1
861-GKQ2FW	Stainless steel grate for 861-SQ2428 - Heavy-duty, heel-resistant wire pattern - Full	1	1
861-BKQ2	Stainless steel debris basket for 861-SQ2428 - fits in bottom of sump area	1	1
STAINLESS STEEL ROUND FLOOR SINKS			
860-3SS	6.75" dia. x 4" deep - Stainless steel round floor sink with debris basket - 4" No-Hub connection	1	1
860-4SS	8.875" dia. x 4" deep - Stainless steel round floor sink with debris basket - 4" No-Hub connection	1	1
ROUND FLOOR SINK ACCESSORIES			
860-3SSS	Replacement grate - slotted, heavy-duty stainless steel - for 860-3SS	1	1
860-4SSS	Replacement grate - slotted, heavy-duty stainless steel - for 860-4SS	1	1
860-4SSU	Replacement debris basket - perforated stainless steel - for 860-4SS	1	1