

IN STOCK @



WALTER MORRIS

Hydromechanical Grease Interceptors (HGI)



7GPM (0.44 LPS) - 10GPM (0.63 LPS)

3907A02S

3910A02S

Compact models use the patented Endura baffle system to enhance separation performance at low flow rates. EZ-Clean tank design aids exterior cleaning.



15GPM (0.94 LPS) - 20GPM (1.26 LPS)

3915A02S

3920A02S

Endura's original tank, 15-20gpm units are perhaps the most commonly installed products. It suits both on-floor and in-floor applications.



25GPM Lo-PRO (1.6 LPS)

3925AO2LOS

For tight on-floor applications where space is at a premium. Overall height of 11", still meeting requirements of ASME 112.14.3. Internal components can be removed in less than 5" of additional clearance.



25GPM XT (1.6 LPS)

3925XTA03S

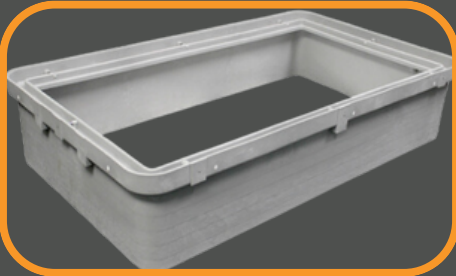
25gpm units use structured foam molding technology providing rigidity and durability while reducing unit weight.



35GPM (2.2 LPS)

3935A02S

Patented diffuser baffle aids separation at increased flow rates within a compact footprint.



Riser Extensions

3925AX6

Each riser set provides 1.5" to 6" of height adjustment. Up to three (3) sets of risers can be used per installation. Risers retain full access for easy cleanout.



Flow Control Device (Included)

3922120CA

The external FCD limits flow and introduces air, a vital part of the interceptors function, allowing Endura to reach up to 98% efficiency.

High Capacity Hydromechanical Grease Interceptors (HGI)



40100A04M

Endura XL 100 - 1059 lbs of grease capacity and a rated grease removal efficiency of 98%.

CONTACT US FOR AVAILABILITY & PRICING

800.888.1922 customerservice@morrismerchants.com

*Inventory levels are subject to change, please call to confirm application and stock status

