

|                        |                            |
|------------------------|----------------------------|
| Job Name: _____        | Job Location: _____        |
| Engineer: _____        | Engineer Approval: _____   |
| Contractor: _____      | Contractor Approval: _____ |
| Contractor P.O.: _____ | Representative: _____      |

## MODEL RS-080 with 3/4" to 2" Ball Valve

### TYPICAL INSTALLATIONS INCLUDE:

- Common-risk housing – condos and apartments
- Commercial break rooms
- New and retrofit construction
- Mechanical rooms

### HIGHLY RECOMMENDED FOR:

- Multi-residential complexes
- Commercial office buildings
- Any facility with a history of insurance claims for water damage

### FEATURES:

- Full-port valves available from 3/4" to 2" dia.; systems with butterfly valves also available from 2-1/2" to 4" dia.
- Reusable and testable
- Easy reset button
- Plugs into a standard 120V AC outlet
- Audible alarm (83 dB)
- Supports multiple water sensors for a wider area of leak detection
- N/O and N/C dry contacts
- Factory pre-wired

### MODIFIED KIT CONFIGURATIONS:

#### RS-080-MK6 Plenum-Rated Kit –

Features plenum-rated wires and step-down transformer (120, 208, 240V AC to 24V AC) with mounting plate in lieu of standard wall wart. Ideal for any application that requires a valve installation on a supply line up in the plenum, with power and leak detection sensing in the work space below.



### APPLICATION CONSIDERATIONS:

The RS-080 is designed for localized leak detection (one room, one floor, etc.). When a leak is detected, the unit will sound an alarm and automatically shut off the main water supply line, preventing extensive water damage.

### INSTALLATION OVERVIEW:

The full-port shut-off valve installs on the main water supply line. The receiver box plugs into a standard 120V AC wall outlet. A magnetic sensor is placed in an area where water from a leak is likely to accumulate, mounted either horizontally or vertically using the included metal plate. Components come prewired.

Optional Cable Adder between the receiver and valve assembly allows the receiver to be located up to 100' from the valve (available in standard 10', 25', 50' and 100' lengths). Ideal for situations where the valve is located in hard to reach locations such as in risers, ceilings, crawl spaces, etc.

The system can be performance tested anytime; it is resettable via reset button on the receiver box. Optional dry contact connections (NO/C/NC) are available for fault notification to existing security panel or BMS.

Emergency manual operation of the valve is accomplished by turning the knob on the top of the actuator. In the event of a power failure, the valve will remain in position (either open or closed).

**ORDERING INFORMATION:**

| Valve Size | P/N          | UPC          |
|------------|--------------|--------------|
| 3/4"       | RS-080-3/4   | 857640005281 |
| 1"         | RS-080-1     | 857640005298 |
| 1-1/4"     | RS-080-1-1/4 | 857640005304 |
| 1-1/2"     | RS-080-1-1/2 | 857640005311 |
| 2"         | RS-080-2     | 857640005328 |

**OPERATING SPECIFICATIONS:**
**Ball Valve**

Pressure Rating ..... 600 WOG - 150 WSP

Max. Temperature..... 366°F

**Electric Actuator**

Voltage ..... 24V AC

Absorbed Current ..... 1.0 A

Absorbed Power ..... 24V A

Frequency ..... 50/60 Hz

Working Temp. .... -4° to 131°F

**Receiver Box**

Audible Alarm ..... 83 dB

**MATERIALS:**
**Ball Valve**

Body ..... Low-lead brass

End Connection ... Low-lead brass

Stem ..... Low-lead brass

 Ball ..... Low-lead brass  
(tea coated)

Ball Seats ..... PTFE

O-Rings ..... FKM (Viton®)

**CABLE LENGTHS:**

Power Cord ..... 12'

Sensor Cable ..... 8' (custom lengths avail.)


Valve Cable ..... 8' (adder lengths avail.)

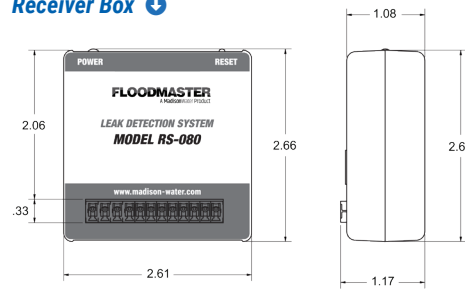
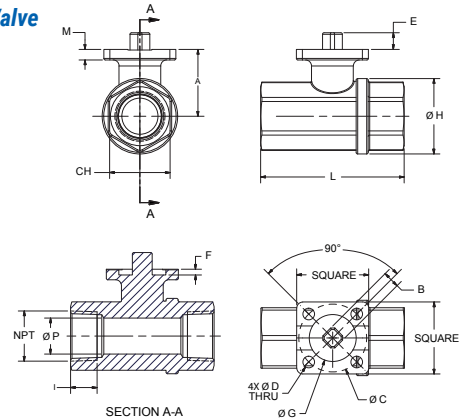
**APPROVALS:**

NSF/ANSI 61 and 372 approved valve.

MA Board of Registration of Plumbers

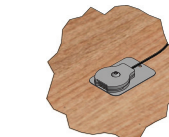
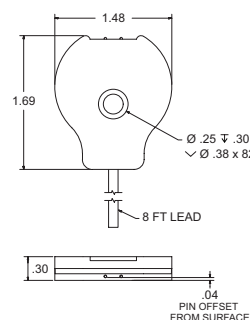
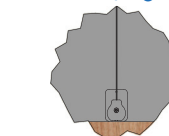
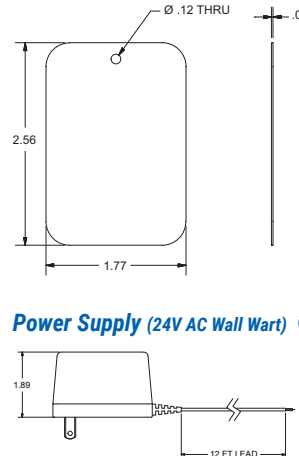
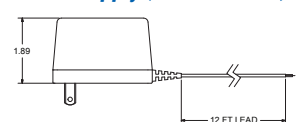
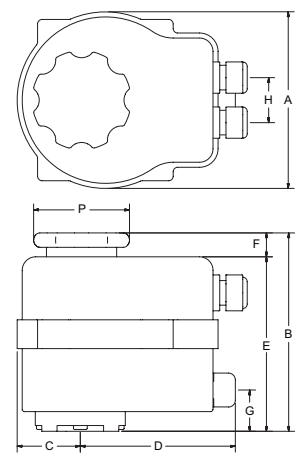
Approval – Code # P3-0818-66.

 UL classified actuator.

**DIMENSIONS:**
**Receiver Box**

**Shut-Off Ball Valve  
(3/4" to 2")**


| RS-080 Shut-Off Ball Valve Specifications: 3/4" through 2" |        |      |      |                |      |      |      |      |      |      |      |      |      |      |        |     |      |        |
|--|--------|------|------|----------------|------|------|------|------|------|------|------|------|------|------|--------|-----|------|--------|
| Size   | Square | A    | B    | C              | D    | E    | F    | G    | H    | I    | L    | CH   | M    | P    | CV     | PSI | LBS  | IN-LBS |
| 3/4"   | 1.50   | 1.36 | 0.35 | 1.42 (ISO F03) | 0.24 | 0.35 | 0.08 | 0.98 | 1.57 | 0.64 | 2.99 | 1.26 | 0.22 | 0.75 | 34.10  | 580 | 0.40 | 53.10  |
| 1"   | 1.50   | 1.79 | 0.35 | 1.42 (ISO F03) | 0.24 | 0.35 | 0.12 | 0.98 | 1.93 | 0.75 | 3.54 | 1.61 | 0.24 | 0.95 | 49.71  | 580 | 0.75 | 53.10  |
| 1-1/4"   | 1.50   | 1.93 | 0.35 | 1.42 (ISO F03) | 0.24 | 0.35 | 0.12 | 0.98 | 2.30 | 0.84 | 4.02 | 1.97 | 0.24 | 1.18 | 102.88 | 580 | 1.05 | 53.10  |
| 1-1/2"   | 1.97   | 2.52 | 0.43 | 1.97 (ISO F05) | 0.28 | 0.43 | 0.12 | 1.38 | 2.87 | 0.84 | 4.49 | 2.17 | 1.39 | 1.50 | 265.88 | 580 | 1.73 | 150.46 |
| 2"   | 1.97   | 2.88 | 0.43 | 1.97 (ISO F05) | 0.28 | 0.43 | 0.12 | 1.38 | 3.60 | 1.01 | 5.43 | 2.76 | 0.31 | 1.98 | 306.34 | 580 | 2.98 | 150.46 |

(IN-LBS) TORQUE VALVES ARE MEASURED IN LABORATORY TESTS UNDER THE FOLLOWING CONDITIONS: TEMPERATURE: 68°F; PRESSURE: 0 PSI; FLUID: PURIFIED WATER.

**Water Sensor**

 HORIZONTAL  
INSTALL OPTIONS  
VERTICAL

**Metal Plate**

**Power Supply (24V AC Wall Wart)**

**Actuator**


| RS-080 Electric Actuator Specifications |                      |      |      |      |      |      |      |      |      |      |      |
|---|----------------------|------|------|------|------|------|------|------|------|------|------|
| Size                                    | Drilling<br>ISO 5211 | A    | B    | C    | D    | E    | F    | G    | H    | I    | P    |
| 3/4", 1", 1-1/4"                        | F03-F05              | 4.84 | 5.57 | 1.67 | 4.74 | 4.96 | 0.61 | 4.06 | 1.26 | 0.55 | 2.68 |
| 1-1/2", 2"                              | F03-F05              | 6.18 | 7.40 | 2.38 | 5.12 | 5.75 | 1.65 | 1.30 | 1.42 | 0.47 | 2.68 |

**AVAILABLE ACCESSORIES:**

- **Wired Water Sensors** – Additional sensors can be wired to a single RS-080 receiver box for a wider area of leak detection.
- **Sensing Rope Kit** – Ideal for use with low tanks, or for room perimeter and sub-floor leak detection applications.
- **Auto Dialer** – Receive automatic alerts whenever the RS-080 identifies a fault condition.
- **Cable Adder** – Allows for positioning of the RS-080 receiver up to 100' further away from the valve.

MadisonWater recommends that installations be completed by a licensed plumber to ensure that all local code requirements are followed.



 MadisonWater  
27 Business Park Drive  
Branford, CT 06405

 madison-water.com  
203-488-2684  
info@madison-water.com